

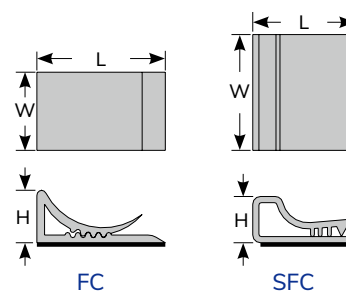
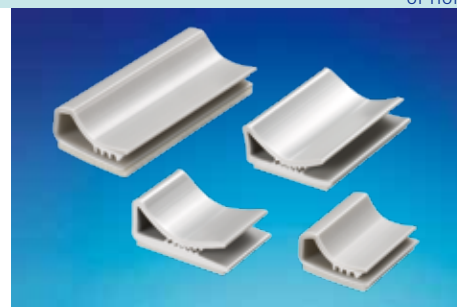
# 0530 KSS FLAT CABLE CLAMP

RoHS

OPTION

- Material: **UL94V-0** and **M1** flame rated, UL approved PVC with adhesive tape.
- Color: Grey
- Conduct your flat cable neatly and firmly.
- Insert your cable into the clamp and your job is done.

Item No.	L	W	H	Packing
FC-15	24	15	9	100pcs
FC-20	24	20	9	
FC-25	24	25	9	
FC-28	24	28	9	
SFC-15	13	15	6	
SFC-20	13	20	6	
SFC-25	13	25	6	
SFC-28	13	28	6	



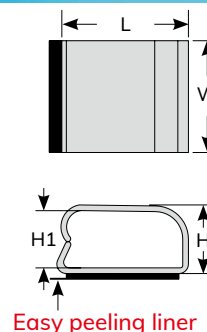
# 0531 KSS CABLE CLAMP

RoHS

OPTION

- Material: **UL94V-0** and **M1** flame rated, UL approved PVC with adhesive tape.
- Color: Grey.
- Feature: Easy peel liner can help to peel off easily.
- Application: Peel off the liner, position on the flat surface then secure the wires or cables.

Item No.	L	W	H	H1	Packing
RCL-12	28.5	25.4	13.8	11.4	100pcs



# 0532 KSS CABLE CLAMP

RoHS

OPTION

- Material: **UL94V-0** and **M1** flame rated, UL approved PVC with adhesive tape.
- Color: Grey.
- Application: Peel off the liner, position on the PC board surface then fix the cables.

Item No.	L	L1	W	Packing
CL-15	18.5	16	15	100pcs
CL-20	18.5	16	20	
CL-25	18.5	16	25	
CL-28	18.5	16	28	

