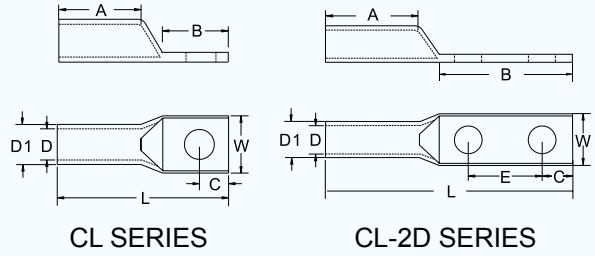


CABLE LUG & TWIN CABLE LUG



Terminal material: Copper



ITEM NO.	Stud Size	DIMENSION								WIRE SIZE	
		W	A	B	C	E	L	D	D1	AWG	DIN mm ²
CL14-8	8.4	12.0	28.5	16	8	-	50	5.8	8.8	#6	10.6-16.7
CL14-8-2D				80	12	45.0	120				
CL22-8	8.4	15.0	28.5	18	8.5	-	55	8.0	10.6	#4	16.8-26.6
CL22-8-2D				80	12	45.0	120				
CL22-10	10.5	15.0	28.5	18	8.5	-	55	8.0	10.6		
CL22-10-2D				80	12	45.0	120				
CL38-10	10.5	18.3	32.0	24	10	-	64	9.8	12.4	#2	26.7-42.4
CL38-10-2D			31.7	80	12	45.0	120				
CL38-12	13.0	18.3	32.0	24	10	-	64	9.8	12.4		
CL38-12-2D			31.7	80	12	45.0	120				
CL60-10	10.5	20.5	36.0	22	10	-	70	11.0	14.0	1/0	42.5-60.5
CL60-10-2D			40.0	75	12	45.0	130				
CL70-12	13.0	21.4	38.0	26	10	-	72	12.0	15.0		
CL70-12-2D			40.0	80	12	45.0	130				
CL80-12	13.0	23.2	38.0	26	13	-	75	13.0	16.0	3/0	76.3-97.0
CL80-12-2D			50.0	80	16	45.0	130				
CL100-12	13.0	26.0	40.0	26	13	-	75	14.0	18.0	4/0	96.3-117
CL100-12-2D			50.0	80	16	45.0	132				
CL125-12	13.0	28.0	40.0	32	13	-	85	16.0	20.0	250MCM	127
CL125-12-2D			50.0	80	16	45.0	135				
CL150-12	13.0	31.0	46.0	32	16	-	94	17.0	22.0	300MCM	152
CL150-12-2D			50.0	80	16	45.0	150				
CL180-12	13.0	33.0	46.0	32	16	-	98	18.2	23.0	350MCM	177
CL180-12-2D			50.0	80	16	45.0	150				
CL200-12	13.0	36.0	48.0	36	16	-	104	20.0	26.0	400MCM	203
CL200-12-2D			50.0	80	16	45.0	150				
CL250-12	13.0	40.0	48.0	40	18	-	114	22.0	28.0	500MCM	253
CL250-12-2D			50.0	80	16	45.0	150				
CL325-12	13.0	45.0	50.0	50	20	-	118	25.0	32.0	650MCM	325
CL325-12-2D			55.0	89	16	45.0	180				
CL400-12	13.0	48.0	60.0	54	22	-	130	30.0	37.0	800MCM	500
CL400-12-2D			90	18	45.0	180					
CL500-12	13.0	56.0	60.0	60	24	-	150	31.0	40.0	1000MCM	500
CL500-12-2D			93	21	45.0	180					