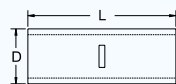


BUTT SPLICE



Terminal material: Copper

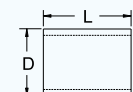


ITEM NO.	DIMENSION		WIRE SIZE	
	D(mm)	L(mm)	AWG	DIN mm ²
B-1.25	3.3	14.5	22-16	0.5-1.0
B-2	4.0	14.5	16-14	1.5-2.5
B-3.5	4.5	14.5	14-12	2.5-4
B-5.5	5.0	14.5	12-10	4-6
B-8	6.4	20.0	8	10
B-14	8.0	25.0	6	16
B-22	10.4	28.0	4	25
B-38	12.3	31.0	2	35
B-60	14.5	34.0	1/0	50
B-70	16.2	35.0	2/0	70
B-80	18.0	36.0	3/0	95
B-100	20.8	37.0	4/0	120
B-125	23.0	44.0	-	-
B-150	24.8	52.0	250-300MCM	150
B-180	26.6	55.0	300-350MCM	185
B-200	30.6	61.0	400MCM	240
B-250	30.6	61.0	400MCM	240
B-325	35.0	70.0	500-600MCM	300

PARALLEL SPLICE



Terminal material: Copper

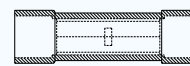


ITEM NO.	DIMENSION		WIRE SIZE	
	D(mm)	L(mm)	AWG	DIN mm ²
P-1.25	3.3	8.0	22-16	0.5-1.0
P-2	4.0	8.0	16-14	1.5-2.5
P-3.5	4.5	8.5	14-12	2.5-4
P-5.5	5.0	8.5	12-10	4-6
P-8	6.4	9.5	8	10
P-14	8.0	11.0	6	16
P-22	10.4	13.5	4	25
P-38	12.3	16.5	2	35
P-60	14.5	19.0	1/0	50
P-70	16.2	19.0	2/0	70
P-80	18.0	19.5	3/0	95
P-100	20.8	20.0	4/0	120
P-125	23.0	24.0	-	-
P-150	24.8	27.0	250-300MCM	150
P-180	26.6	28.5	300-350MCM	185
P-200	30.6	32.0	400MCM	240
P-250	30.6	32.0	400MCM	240
P-325	35.0	37.0	500-600MCM	300

BUTT SPLICE INSULATED



Terminal material: Brass
Insulation material: Vinyl



ITEM NO.	WIRE SIZE	
	AWG	DIN mm ²
BF-1.25S	22-16	0.5-1.0
BF-2.0S	16-14	1.5-2.5
BF-5.5S	12-10	4-6

NYLON INSULATED BUTT SPLICE



Terminal material: Brass
Insulation material: Nylon

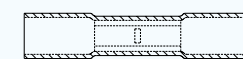


ITEM NO.	WIRE SIZE	
	AWG	DIN mm ²
BN-1.25S	22-16	0.5-1.0
BN-2.0S	16-14	1.5-2.5
BN-5.5S	12-10	4-6

BUTT SPLICE (WATER PROOF & HEAT SHRINKABLE)



Terminal material: Copper
Insulation material: Heat shrinkable tube



ITEM NO.	WIRE SIZE	
	AWG	DIN mm ²
BHS-1.25	22-16	0.5-1.0
BHS-2.0	16-14	1.5-2.5
BHS-5.5	12-10	4-6

NON INSULATED FEMALE LUG



Terminal material: Brass



ITEM NO.	WIRE SIZE	WIRE SIZE	
	NEMA SIZE	AWG	DIN mm ²
	W x T (mm)		
1.25-7A	7.0 X 0.8	22-16	0.5-1.0
2-7A	7.0 X 0.8	16-14	1.5-2.5
5.5-7A	7.0 X 0.8	12-10	4-6