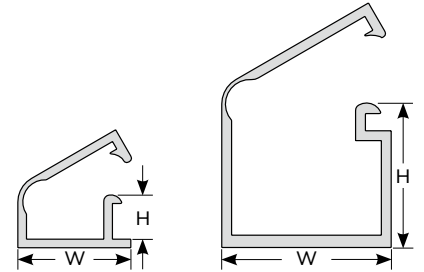


0113 KSS ONE PIECE WIRING DUCT



- Material: **UL94V-0** and **M1** flame rated, UL approved PVC.
- Color: Ivory.
- PVC service temperature: 85°C
- One piece design. Combines duct base together with its lip. Easy for application and save working time.
- With adhesive tape. Cloth adhesive and foam adhesive are available.

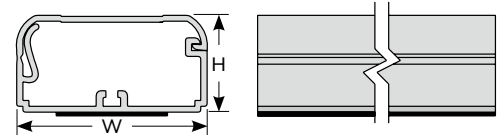
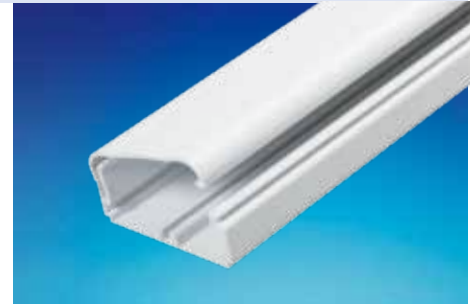


Item No.		W	H	Length
Without Tape	With adhesive Tape	mm	mm	
TF-0905IY	TF-0905TIY	9.2	2.9	2M
TF-1313IY	TF-1313TIY	13.2	10.8	

0113 KSS ONE PIECE WIRING DUCT



- Material: **UL94V-0** and **M1** flame rated, UL approved PVC.
- Color: White.
- PVC service temperature: 85°C
- One piece surface raceway is a single channel designed to route, protect and conceal video or power cabling, can be opened and closed repeatedly without cracking.
- Factory applied adhesive backing speeds installation.
- With adhesive tape. Cloth adhesive and foam adhesive are available.

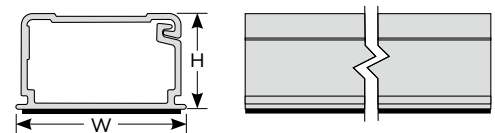


Item No.	W	H	Length
	mm	mm	
OS-2012TWE	20.3	11.9	1.83M with adhesive tape
OS-4020TWE	38.8	19.3	
OS-6322TWE	62.8	22.0	

0113 KSS ONE PIECE WIRING DUCT



- Material: **UL94V-0** and **M1** flame rated, UL approved PVC.
- Color: White.
- PVC service temperature: 85°C
- One piece surface raceway is a single channel designed to route, protect and conceal video or power cabling, can be opened and closed repeatedly without cracking.
- With adhesive tape. Cloth adhesive and foam adhesive are available.



Item No.		W	H	Length
Without Tape	With adhesive Tape	mm	mm	
NEW OP-1714WE	OP-1714TWE	16.9	14.2	1.83M
OP-2013WE	OP-2013TWE	19.5	13.8	
OP-3220WE	OP-3220TWE	31.8	19.6	
OP-4527WE	OP-4527TWE	45.1	27.0	