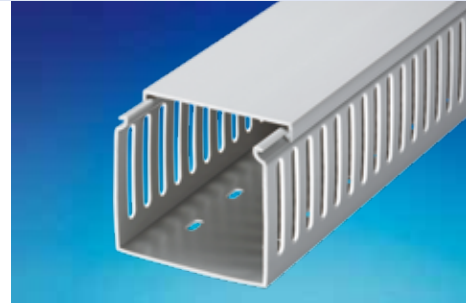
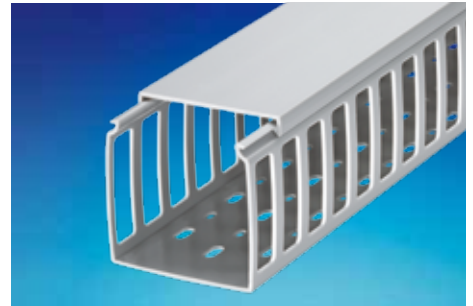
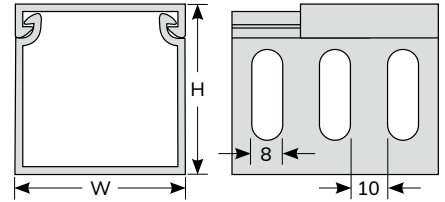


0101 KSS WIRING DUCT (CLOSE SLOTTED)

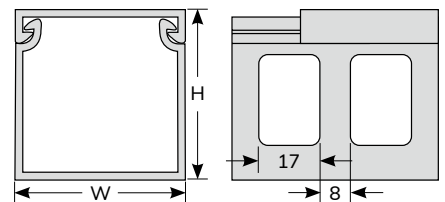
- Material: **UL94V-0** and **M1** flame rated, UL approved PVC.
 - Color: Grey.
 - PVC service temperature: 85°C
 - Close slot design facilitate easy installation or removal of cover.
 - LDC series with larger slot is suitable for big wire, and vaporize the heat from cables much quickly.
 - Slot can be cut when enlarge slot is necessary.
- ※The standard wiring duct can be available for non-slip cover, suitable for vertical installations. The item number please specify for example,
Item no. : VDC-2530→VQC-2530
Non-slip cover for the size less than 20mm width or bigger than 125mm is available upon request.



VDC SLOT : 8mm



LDC SLOT : 17mm



Item No.		W x H	Length
SLOT			
8mm	17mm	mm	2M
VDC-2530		25 X 30	
VDC-4040		40 X 40	
VDC-8040		80 X 40	
VDC-5050		50 X 50	
VDC-2560		25 X 60	
VDC-4060	LDC-4060	40 X 60	
VDC-6060	LDC-6060	60 X 60	
VDC-8060	LDC-8060	80 X 60	
	LDC-3365	33 X 65	
	LDC-4565	45 X 65	
	LDC-6565	65 X 65	
VDC-4080	LDC-4080	40 X 80	
VDC-6080	LDC-6080	60 X 80	
VDC-8080	LDC-8080	80 X 80	
	LDC-33100	33 X 100	
VDC-40100		40 X 100	
	LDC-48100	48 X 100	
VDC-100100	LDC-100100	100 X 100	

0101B KSS WIRING DUCT ASSEMBLE TOOL

- Material: UL94V-2 flame rated, UL approved Nylon 66.
- Color: Black
- Application: To interlock the tool hook side with duct lid hook, press lightly the duct side wall and walk the tool blade forward, duct lid will be easily mounted on duct base.
- Function: To cover slotted type wiring duct lid easily with its base.



Item No.	Dimension	Packing
WA-1	As Figure	10PCS



Film

